

**Overview**

The exacqVision Client software has three operating modes: Live, Search, and Setup. To access the desired operating mode, click on the appropriate icon displayed on the left side of the tool bar.



**Live Mode** allows users to view live video and perform simple exacqReplay searches.



**Search Mode** allows users to perform simple or comprehensive searches of recorded video.



**Setup Mode** allows Administrators and Power Users to configure systems.

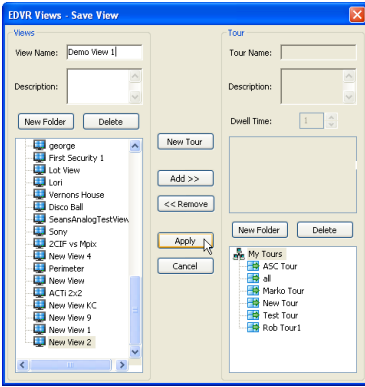
This document covers the most common features of both the Live and Search operating modes.

**Basic Live Mode Features**

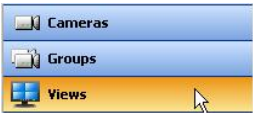
You can easily view cameras in the layout that is best suited for your needs. Simply click on one of the blue camera view icons at the top of the screen while in Live Mode.



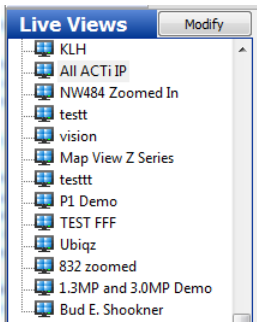
Drag and drop the desired cameras from the camera tree on the left side of the screen to the Video Panel. You can replace the video in a panel by dragging a new camera in from the camera tree or from another panel. Note that you can drag and drop cameras from any networked exacqVision server that you can connect to, regardless of where it is located.



When you've finished creating a layout, you can save it as a view that you quickly access later. Just click on the Save View button at the top left of the Live Cameras tree. A pop-up window then allows you to name and save the view. Click Apply when finished.



To open a saved view, click on the Views button at the bottom left of the Live Cameras tree and then select the appropriate view.



### Quick Single Camera (1x1) View

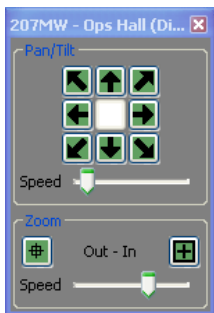
You can switch to the single camera mode (or 1x1 mode) for any camera in your view by double-clicking on any of the live video panels in Live Mode. After you are finished viewing the single camera, just double-click on the image again and you will return to the previous view.

### PTZ Control and Digital PTZ in Live Mode

If you roll your mouse over the video from a PTZ camera, the arrow cursor becomes a cross cursor or directional arrow. The cross allows you to zoom in and out using the scroll wheel on your mouse or by using the Page Up (zoom in) or Page Down (zoom out) keys on your keyboard. The directional arrows allow you to pan or tilt the camera in the same direction as the arrow by clicking on the mouse button (you can also use the arrows on your keyboard to pan and tilt the camera).

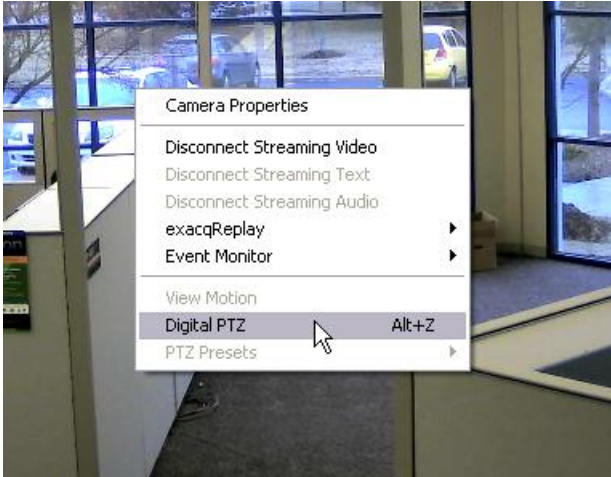


Alternatively, you can open the PTZ controls by clicking on the PTZ controls launch button.



The PTZ Controls also allow you to change how fast the cameras moves and zooms.

Any camera can function like a PTZ camera if you activate the Digital PTZ option. Right-click anywhere in the live video panel and choose the Digital PTZ option from the menu (or simply press Alt+Z on your keyboard).

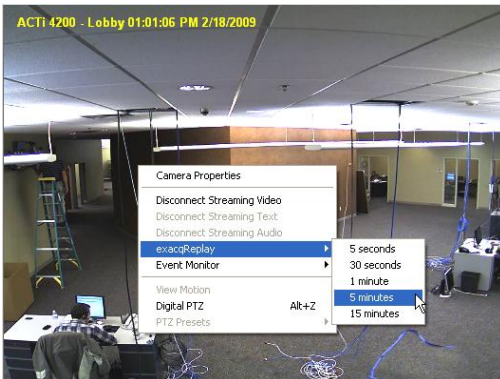


Now you can use the PTZ controls on this camera as well, just as you would with an actual PTZ camera. Note that when you zoom and move the image via Digital PTZ you are not changing what is being recorded; the entire image is always recorded.

After you have enabled the Digital PTZ option on a camera, you can quickly zoom in on a rectangular area of the image by holding down the Ctrl button on your keyboard. The cross cursor or arrow cursor becomes a magnifying glass cursor. Click anywhere in the panel and hold down the mouse button while drawing a box around the area where you want to zoom. This feature works only when Digital PTZ is enabled.

To turn the Digital PTZ feature off, right-click the video window and select Digital PTZ, or press Alt+Z.

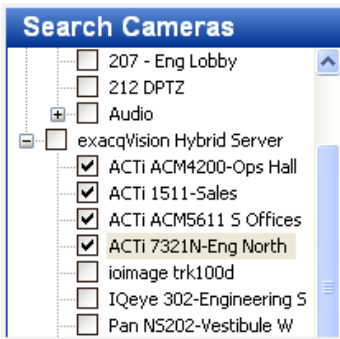
### exacqReplay



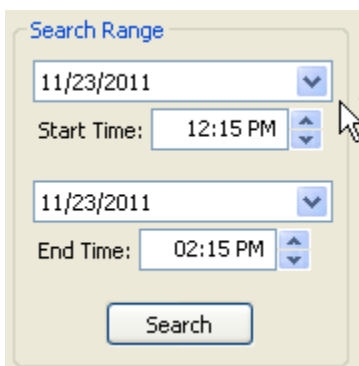
You don't have to leave the Live Mode to perform a simple search on one of the cameras in your current View. Simply right-click anywhere on the video image and choose exacqReplay from the pop-up menu. Then click on the amount of recorded video you want to view (up to 15 minutes).

## Basic Search Mode Features

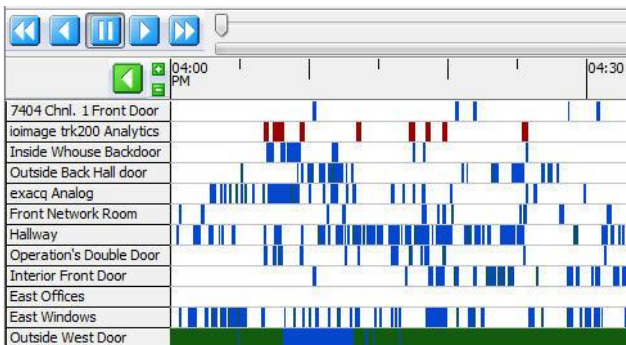
To begin a search for video or data, select one or more cameras or devices using the checkboxes in the Search Camera tree. To quickly select all the cameras on a server, click the box before the name of the server.



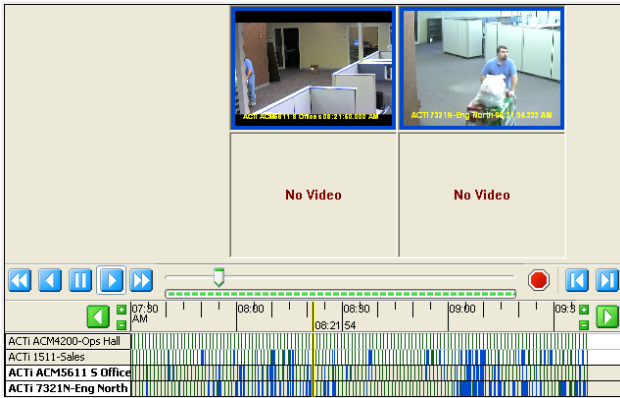
Next, select the desired start and end time and date using the Search calendar, and then click the Search button.



A timeline then appears at the bottom of the screen. Recorded data will be represented by bars of three different colors in the timeline. Blue indicates that video was recorded based on motion detection. Red indicates that video was recorded because an alarm was triggered (by an opened door, for example). Green indicates that the camera is recording continuously (Free Run). If you notice intermittent, equally spaced areas of green video bars, the camera is probably configured to record in Time Lapse mode. White areas in the time line indicate that no video has been recorded.










You can view recorded video for one or multiple cameras in the Video Playback window. To view video from a single camera, double-click on the blue, red or green indicator on the timeline. The recorded video then loads and playback begins.



To play back video from multiple cameras simultaneously, hold down the Ctrl or Shift key as you select the camera names on the left of the timeline. When you have selected all the desired cameras, double-click the blue, red or green indicator on the timeline that corresponds to the time you wish to view.

After the video has downloaded, you can reverse, fast forward, or pause the video using the Video Playback controls.

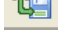
-  Play video in reverse fast (double) speed
-  Play video in reverse in normal speed
-  Stop/Pause video play
-  Play video forward in normal speed
-  Play video forward in fast speed
-  Play video forward one frame at a time
-  Play video backward one frame at a time

You can also move forward and backwards in the video by using the scrub or slider controls located just above the timeline. Click and hold the green and grey scrub button (note that it turns yellow-orange when you mouse over it) and move the button back and forth along the scrub or slider bar. This is called scrubbing through video.

The digital PTZ function can be accessed and utilized from the Search Mode just as it is in Live Mode. Right-click in any of the video panels and select Digital PTZ. You can now access the PTZ controls or use the keyboard shortcuts described earlier. Note that this does NOT affect the recorded video.

### Exporting Video

After you have searched for video, you can easily export video clips as a file on your computer and then to a CD or DVD drive. To begin an export, scrub to the video at the time you would like to start. Right-click the video panel and select Mark Export Start from the pop-up menu. Then scrub to the end of the video clip and select Mark Export Stop from the pop-up menu.

After the video is marked, save it by clicking the Save Video button at the top of the screen.  Alternatively, you can right-click the panel again and choose Export Video.

Select a location where you want to save the file, type in a name for the clip, and then click the Save button on the pop-up window. After video has been exported, the Burn Disc icon is activated:



Insert a blank CD or DVD, select the exports you want to burn, and click the Burn Disc button. Select the appropriate burn options and then click Burn. The CD or DVD will then contain the clips, which can be played as an executable file from any PC.